

## 10-YEAR WARRANTY

Interior wall 70mm + Exterior wall with insulation 150mm

Certified Nordic Pin

**All homes can be fully customized, expanded, or adapted to your requirements. We also undertake bespoke projects and offer models beyond those showcased on the website.**

### HOUSE with an approximate area of 135m<sup>2</sup>

What is included in the price

- Base of the house in concrete blocks
- House assembly
- Delivery in 10-14 weeks
- We install throughout the Spanish peninsula
- Free transport to the assembly site

### OPTIONAL water, energy and sewage installations

**Included equipment** — Pre-

installed hot and cold water and bathroom drain.

- Mounting and connecting a water heater (equipment included)
- Assembly and installation of shower cabin, toilet and bathroom furniture (Shower cabin, toilet and bathroom furniture included)
- Pre-installation of cold and hot water and drainage for kitchen and appliances. — Pre-

installation of electrical wiring; 24-module panel, projecting box with cover, 2P 40A differential, single-phase. With a maximum number of 36 sockets, switches and wall lights. Wall lights not included.

White power outlets and switches, white conduits

### Insulation kit

Rockwool insulation for the roof and walls, and polystyrene insulation for the floor.

\*When purchasing the Installations option

## BATHROOM EQUIPMENT OFFER

(shower cabin, toilet and sink kit, water heater) **EXTRA!**

Equipment without warranty

## FREE SHIPPING

Quotation valid for 30 days; thereafter please contact us for updated pricing.



Estrela 90m<sup>2</sup>

The Estrela XXL timber house is an enlarged version of the traditional Estrela model, designed with generous and comfortable living spaces

### Electricity without costs

**Electrical cables embedded within the walls**

Factory-made and only available with wall thicknesses of 58 mm or greater.

### Thickness of the walls

You can select the inner wall from 58mm, 70mm, 94mm and 180mm.

+Insulation Kit The

budget is made with the recommended information.

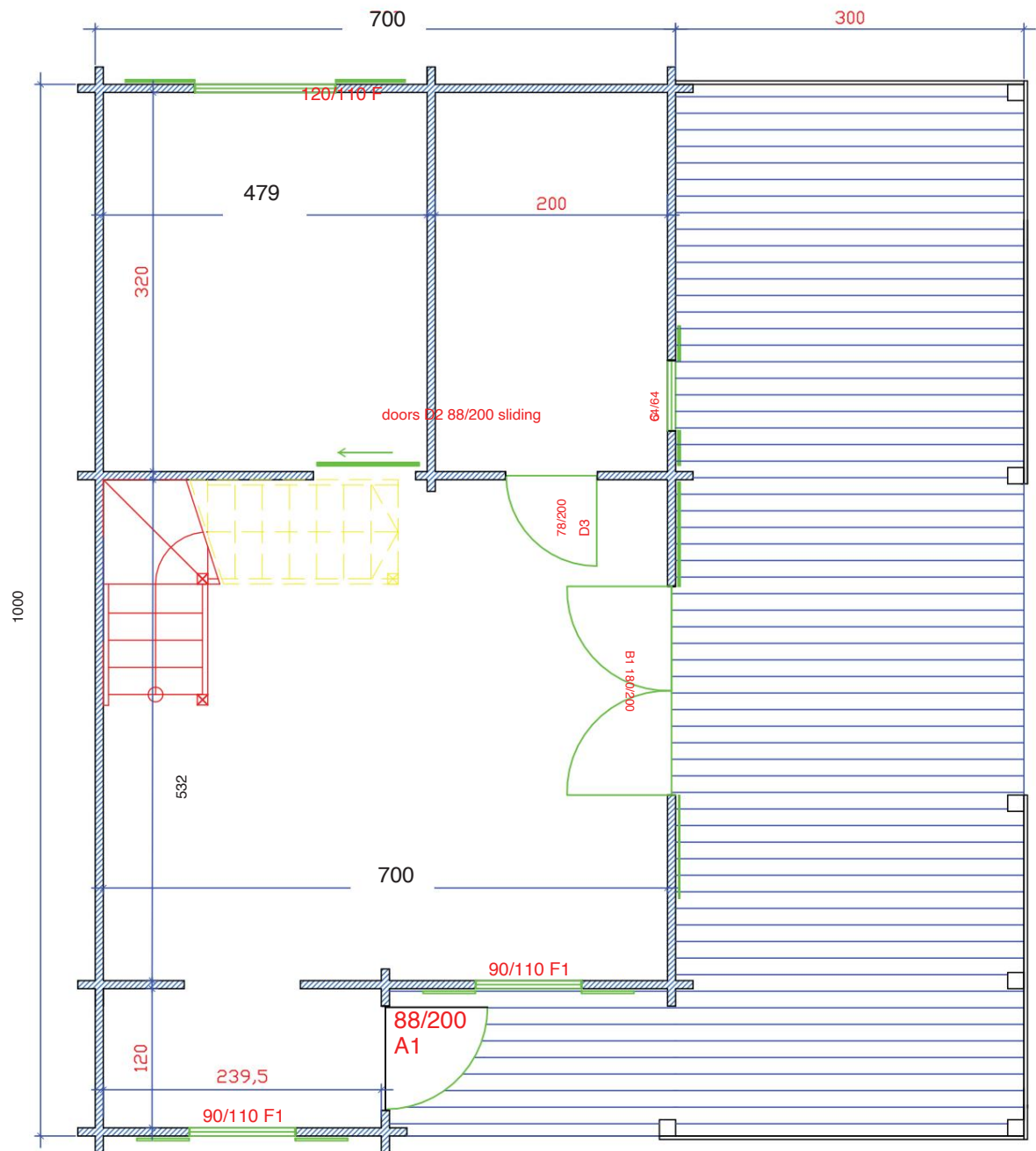
The insulation kit can be added to the simple wall,

which

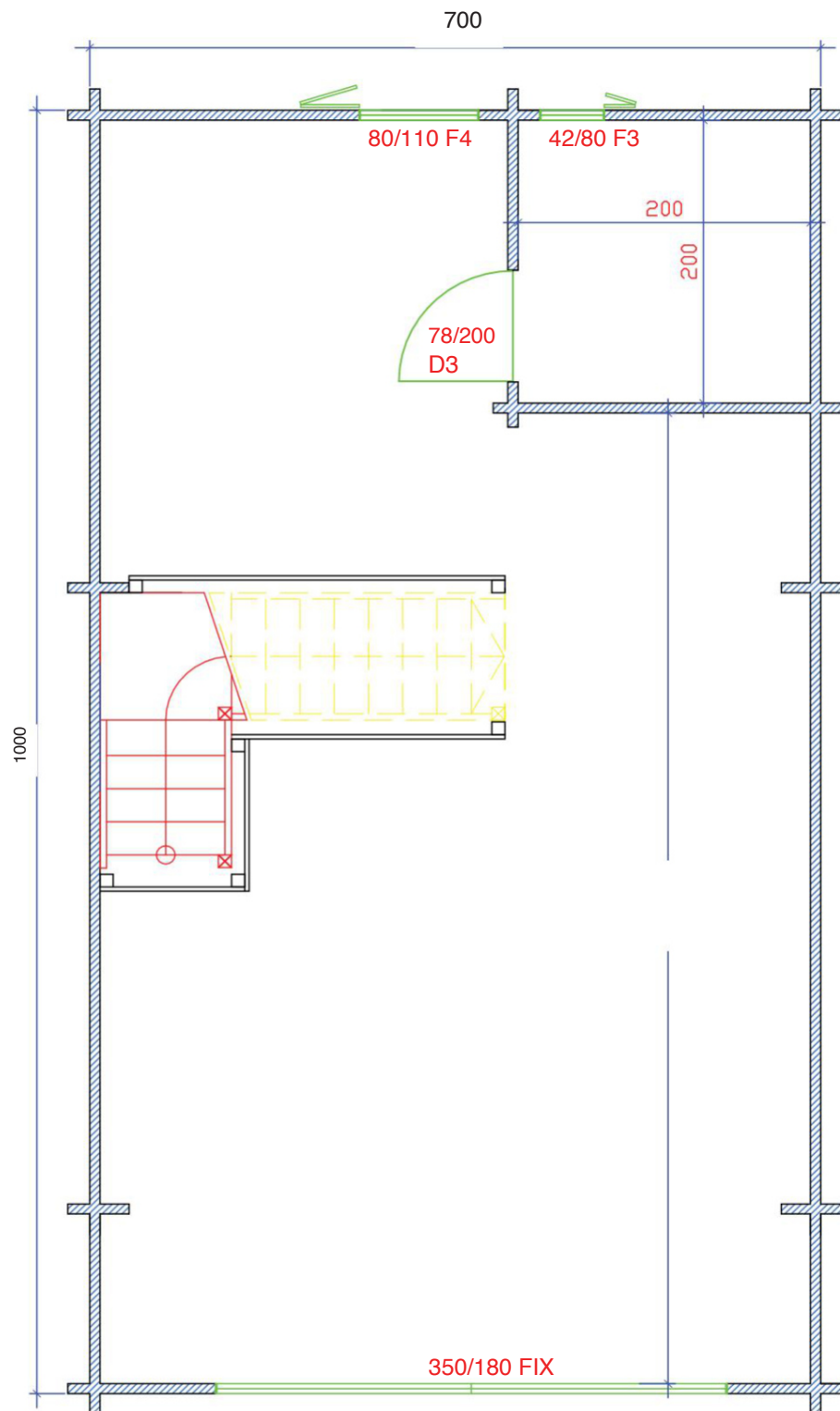
substantially changes the total thickness of the wall.

Kitchen not included

Paint not included



- A1 - External Door 88/200cm full wood 42 mm (passage 79/193.5 cm)
- D2 -Sliding doors 88/200 cm
- D3 - Bathroom doors 78/200 cm 42 mm full wood (passage 69/193.5 cm)
- B1 - Balcony doors 180/200 cm 68 mm full glass F -
- Double wino 120/110 cm C -
- Single window 64/64 cm frosted glass



F3 - Single window 42/80 cm frosted glass  
F4 - Single window 80/110 cm  
FIX - FIX window 350/180 cm, glass P4 1 side